

Gladstone Nature Park Butterfly/ Pollinator Hill

NANCY EICHSTEADT

FRIENDS OF GLADSTONE NATURE PARK



Butterfly/Pollinator Hill Overview

- 2019-2022
- \$13,100 FROM 3 GRANTS
- 10,000 SQUARE FEET
- 1,500 NEW NATIVE PLANTS
- 1,200+ VOLUNTEER HOURS
- 250 GLADSTONE STUDENTS
- 19 YELLOWJACKET NESTS
- 15 COMMUNITY PARTNERS
- 2 DUMP TRUCK LOADS OF SOIL
- 1 ART INSTALLATION
- 1 WEDDING



THREE-YEAR PROJECT

- ▶ Metro Nature in Neighborhoods Community Grant
- ▶ \$11,600 1/1 Matching Grant
- ▶ Originally 2 years, but extended because of pandemic



ADDITIONAL FUNDING

- ▶ OnPoint Community Credit Union
 - ▶ \$500 -- 2019
 - ▶ \$1000 -- 2022
- ▶ In-kind donations and volunteer hours



10,000 SQUARE FEET

- ▶ Highest point in the Nature Park
- ▶ Giant pile of rocks
- ▶ Covered with invasives and poison oak



1500 NEW NATIVE PLANTS

- ▶ Pollinator-attracting plants
- ▶ We wanted more biodiversity
- ▶ Chose only Oregon native plants, many were already present throughout the park
- ▶ Locally-sourced nurseries



1,200+ VOLUNTEER HOURS

- ▶ Volunteers included:
 - ▶ FOGNAP volunteers and neighbors
 - ▶ Community members
 - ▶ LDS Sisters
 - ▶ LDS Just Serve volunteers
 - ▶ Webster Ridge Apts. residents
 - ▶ Kraxberger Middle School students
 - ▶ Gladstone High School students



250 GLADSTONE STUDENTS

- ▶ Before the pandemic:
 - ▶ Gladstone High School shop class
 - ▶ Kraxberger Middle School 6th grade home room
- ▶ After the pandemic:
 - ▶ John Wetten Elementary first and second graders



CHALLENGES

- ▶ 19 Yellowjacket nests
- ▶ Poison oak!
- ▶ Everything needed to be carried up the hill
- ▶ Very little soil on the hill
- ▶ The Nature Park has NO WATER



15 COMMUNITY PARTNERS



Randal &
Nancy Beyers
Family

Tapestry Hills
Nursery



MATERIALS NEEDED

- ▶ Two dump truck loads of soil
- ▶ Amendments
- ▶ Rocks for seating
- ▶ Logs for benches
- ▶ Fencing material
- ▶ Cardboard
- ▶ Bark chips
- ▶ Native plants
- ▶ Mint mulch
- ▶ Watering system



1 ART INSTALLATION

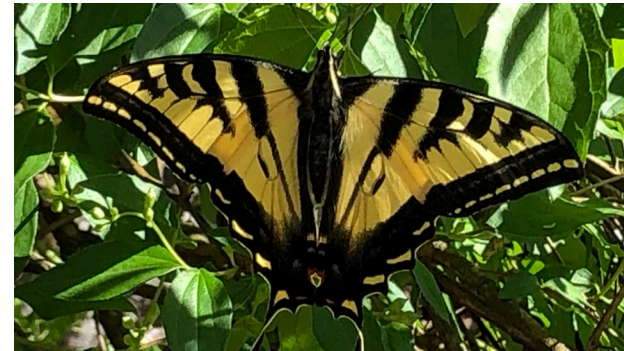
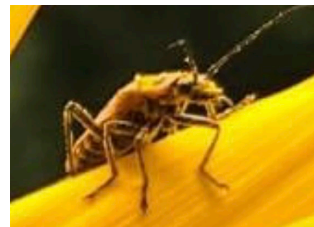
- ▶ Bottoms Up! A Tale of Metal and Glass
- ▶ By Ali Miller and Jim Miller



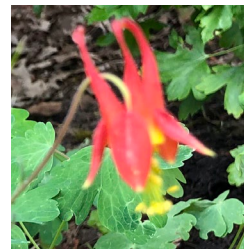
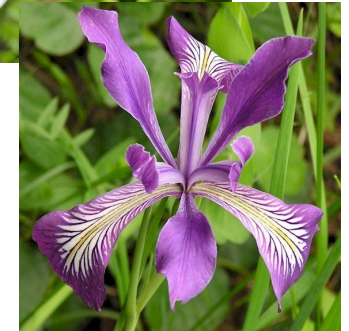
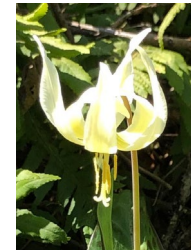
OUTCOMES - POLLINATORS

- ▶ All five of our native pollinators can be found on the hill:

- ▶ Bees
- ▶ Butterflies & moths
- ▶ Birds
- ▶ Bugs
- ▶ Bats



OUTCOMES – NATIVE PLANTS



- All of these native plants and more now thrive on the Butterfly/Pollinator Hill:

Lupin, fox glove, asters, meadowfoam, checkermallow, iris, fawn lilly, Indian plum, trillium, yarrow, mock orange, fringe cup, delphinium, milkweed, red flowering current, golden current, honeysuckle, rose, kinnikinnick, penstemon, Oregon grape, madrone, blueblossom, cammas, dogwood, rhododendron....and much more!

- All are pollinator friendly; many specifically attract butterflies

OUTCOMES - CERTIFICATIONS

► Monarch Waystation Certified



Certificate of Appreciation

Monarch Waystations provide milkweeds, nectar plants, and shelter for monarchs throughout their annual cycle of reproduction and migration.

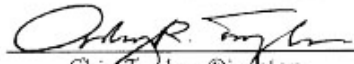
In appreciation for efforts on behalf of monarchs,
Monarch Watch awards this certificate to

Gladstone Nature Park

for the creation and maintenance of Monarch Waystation number
31928

Creating and maintaining a Monarch Waystation contributes to monarch conservation
and helps to assure the continuation of the monarch migration in North America.

CREATE, CONSERVE, & PROTECT MONARCH HABITATS


Chip Taylor, Director
Monarch Watch



www.MonarchWatch.org

OUTCOMES - WEDDING

- ▶ First wedding at the park
- ▶ Second and final wedding for the Nortons



YOU'RE INVITED:
Saturday, June 25



10 am to Noon



1-2 pm

Thanks to our friends and super heros:

Friends of Gladstone Nature Park board: Gary Bokowski, John Eichsteadt, Nancy Eichsteadt, Brian French, Mindy Garlington, Bruce Hildreth, Teri Hildreth, David Michael, Jim Miller, Lisa Preble, William Preble, Tammy Stempel, Nancy Turner.

Thanks to our partners Metro, OnPoint Community Credit Union, City of Gladstone, and Gladstone School District. Thanks also to the Bemis Family, Ali Miller, Tapestry Hills Nursery, Bosky Dell Natives, McFarlane's Bark, Bliss Roofing, Inc., Just Serve, LDS Church Gladstone Stake, Portland Audubon Society, Randal & Nancy Beyers Family, Gordon and Mindy Pin, Karen Zerzan, Mike Leone, Patricia Acheff LLC.