

Meldrum Bar Park Master Plan Update



We'd like to hear from you! The City of Gladstone is beginning a public engagement and planning project to look at potential improvements at Meldrum Bar Park. These potential improvements were first identified in the 2017 Gladstone

Citywide Parks Master Plan.

We're excited to get your feedback about how you use the park, and what improvements you might like to see.

We have launched a project website where you can review information on the project, take a look at the Opportunities and Constraints map, and share your feedback through a short, on-line survey. The survey will be open from December 1st – December 31st.

Please take a few minutes to visit www.meldrumbarpark.org and let us know what you think!



Upcoming City Meetings

City meetings will continue to be held virtually. Upcoming meetings are as follows:

- Park and Recreation Advisory Board will be meeting on Monday, December 13, 2021 at 6:30 pm
- City Council will be meeting on Tuesday, December 14, 2021 at 6:30 pm
- Planning Commission will be meeting on Tuesday, December 21, 2021 at 6:30 pm

More information regarding all City meetings can be found at www.ci.gladstone.or.us/meetings.

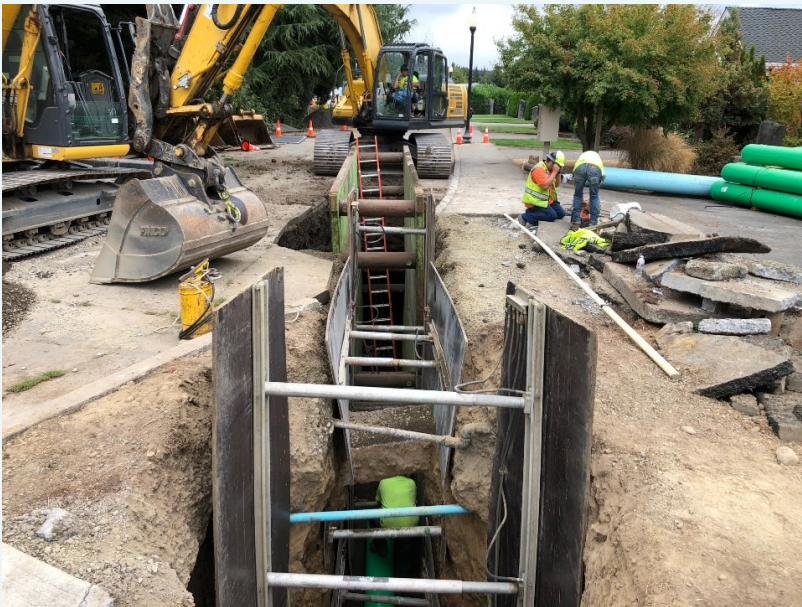
City Closures

City offices, including the Gladstone Civic Center, will be closed:

- Friday, December 24, 2021 for Christmas
- Friday, December 31, 2021 for New Years

During this time, payments may be placed in the silver drop box located in the center of the Civic Center parking lot. Other payment options can be found on the City's website at www.ci.gladstone.or.us/community/page/online-payments

Completion of W. Clackamas Sanitary Sewer Line Project



The City of Gladstone Public Works Dept. is excited to announce the successful completion of the W. Clackamas Sanitary Sewer Line Project. The project started in early August and progressed with minimal delays for the entirety of the project. The City of Gladstone attributes part of the success of this project to the positive working relationship with our contractor NTA, Inc.

The W. Clackamas Project was engineered to correct restricted flow in the existing sanitary sewer line. The City of Gladstone with guidance from DEQ has worked to identify and correct deficiencies in our sanitary system in an effort to reduce future Sanitary Sewer Overflows (SSO). Protecting our surrounding waterways is and will remain a priority for the City of Gladstone and the Public Works Department. With our recent heavy rains, we did not experience a Sanitary Sewer Overflow which is a positive situation for the City. We are confident these infrastructure improvements will have a substantial part in reducing/ preventing future Sanitary Sewer Overflow's.



The W. Clackamas Project replaced 300 ft. of sanitary sewer line, 100 ft. of water line and 100 ft. of storm line, providing new infrastructure in the project area. Bringing this project to a close included fully repaving the section of W. Clackamas Blvd. from Arlington to approximately 335 W. Clackamas Blvd. This portion of the project raised the Pavement Condition Index (PCI) of this section of W. Clackamas Blvd. from its prior rating of 56 to a 100, which is significant to our Pavement Management Plan (PMP).

St. Vincent de Paul and the City of Gladstone

The City of Gladstone has once again partnered with St. Vincent de Paul in helping Gladstone residents who have been financially impacted due to COVID-19. This Gladstone COVID Assistance Program (GCAP) may provide a combination of eligible assistance up to approximately two months of utility payments, one month rent and/or food assistance, with a maximum cap of \$1,000.00 per household.

This program is organized to run through the Society of St. Vincent de Paul and is available for all City of Gladstone residents upon applicant approval. Applicants must show emergency financial need related to COVID-19 and be a Gladstone resident.

For questions or to see if you are eligible, please contact St. Vincent de Paul at 971-236-2111, leave a message with your contact information and financial need. This program will run until December 31, 2026 or until all funding is exhausted, whichever comes first.

Gladstone Food and Toy Drive 2021

The Gladstone Toy & Food Drive is happening again this Holiday season. The Gladstone Fire Dept, in Partnership with Gladstone High School, Rotary, Kiwanis, Portland Police Sunshine Division, KPTV & Les Schwab toy drive, Santa and the Seagrave, community volunteers and individuals and generous businesses in town will be making the holiday season a little brighter for approximately 100 families here in the Gladstone community. All donations are much appreciated and we thank you kindly. Donations will be accepted from now, until the delivery date of December 18th when they will be distributed to the families. New, unwrapped toys and non-perishable food items can be brought to any of the following locations: Gladstone Fire Department (555 Portland Ave. Gladstone), Gladstone Card Room (420 Portland Ave. Gladstone), Shari's (1926 McLoughlin Blvd. Oregon City), Gladstone Latus Motors (870 E Berkeley St. Gladstone), Gladstone Civic Center (18505 Portland Ave. Gladstone), Gladstone Public Library (135 E Dartmouth St. Gladstone), Mr. Rooter (260 82nd Ave. Gladstone), Hamilton's Appliance (19790 McLoughlin Blvd. Gladstone), Somerset Lodge (8330 Cason Rd. and 8360 Cason Rd.), Crossroads Coffee Café (250 Princeton Ave. Gladstone), Bound to Happen (455 Portland Ave. Gladstone), Happy's Bar and Grill (270 Portland Ave. Gladstone) or FIRE Restoration (825 Portland Ave. Gladstone).

Curbside Leaf Pick-up Program

Final Round of Leaf Pick-Up

Area 3 & 4 Nov. 29th – Dec. 3rd

Area 5 & 6 Dec. 6th – Dec. 10th

Area 7 & 8 Dec. 13th – Dec. 17th

As the 2021 Leaf Pick Up Program comes to an end, the Gladstone Public Works Department wants to remind residents to follow these guidelines:

Have your leaf pile ready for pick-up by the first day of your area's designated pick-up schedule. While it is important to have your leaves ready for pick-up by the first day on your schedule, remember that leaves placed in the street too far in advance will cause leaves to wash into storm drains, increasing the risk of flooding in your area.

Have your leaves placed in one large pile in

the street, at least one foot from the curb.

The space between the curb and the leaf pile allows water to drain into the city's storm drains. Keeping the storm drains clear of leaves and debris will benefit both you and your neighbors and help decrease the chances of flooding in your area.

Do not block: pathways, mailboxes, bike lanes, sidewalks, driveways, or intersections with leaf piles. Keep piles separate from garbage and yard debris bins.

Remove any obstructions: Including basketball hoops and parked cars, to allow for the leaf pick-up equipment.

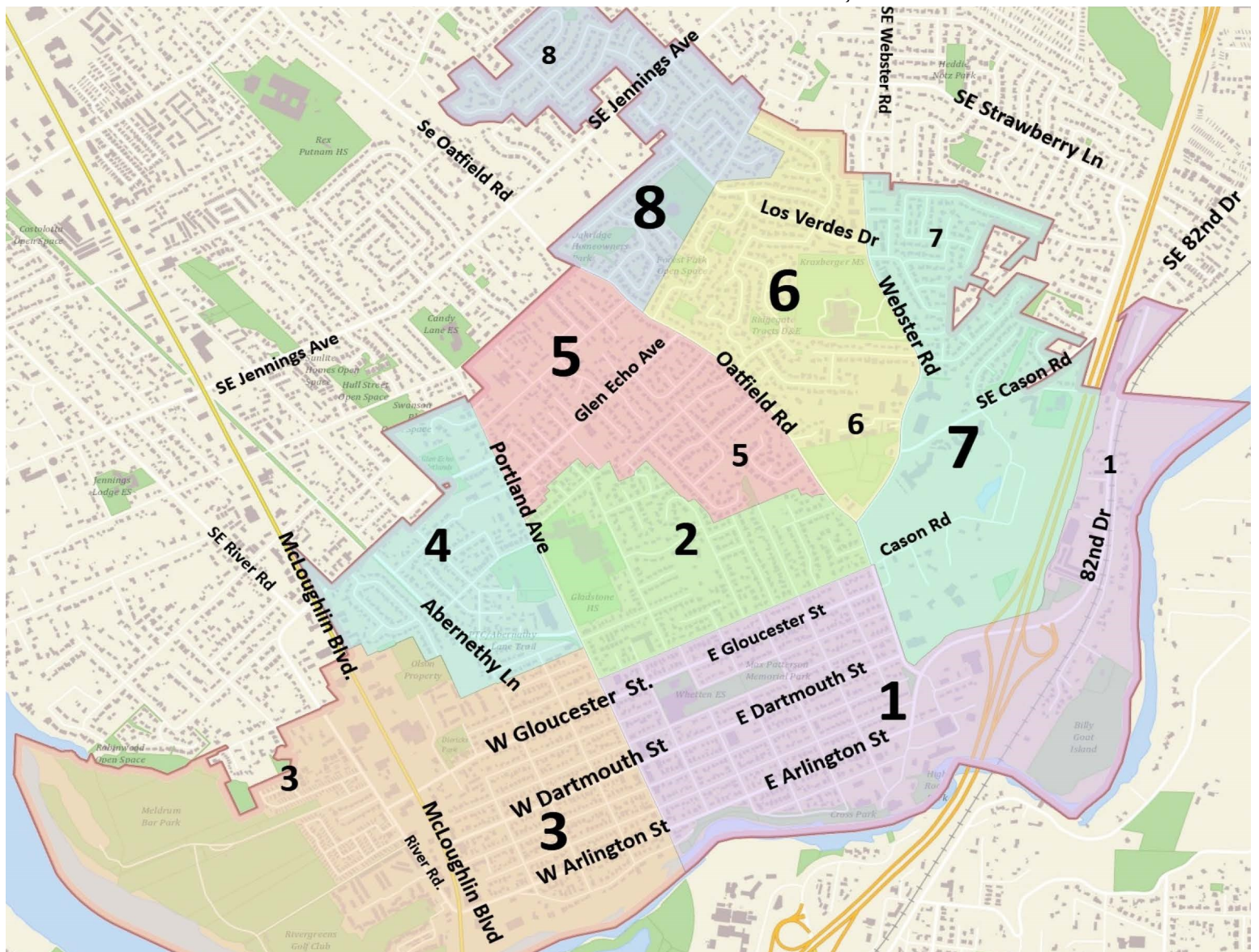
Crews will not pick up: yard debris, tree branches, grass clippings, construction materials or garbage during leaf pick-up. Do NOT place these items in your leaf piles!

Place small piles of leaves in your yard debris bin! Let's keep small piles out of the street!

Use our GIS Map to Locate your Zone with your Address, in 3 Easy Steps

1. Visit www.ci.gladstone.or.us, under the tab "I Want to" Click on "View GIS Mapping"
2. In the search bar at the top of the page, enter your street address and click on the spy glass.
3. Your address should appear in the left side toolbar, look for: "In Street Zone"

If you have any questions, please contact the Public Works Department at 503 656-7957 or e-mail PWOffice@ci.gladstone.or.us. Office hours are weekdays, from 8:00 am to 4:30 pm. Our staff and crew look forward to serving you!



Meldrum Bar Parking Kiosk

Below you will find the net profit (loss) since instillation of the parking kiosk in June 2021.

Revenues:	FY 20/21	FY 21/22
July		27,682.00
August		16,611.00
September		9,736.00
October		
November		
December		
January		
February		
March		
April		
May		
June	12,657.30	
	<u>12,657.30</u>	<u>54,029.00</u>

Expenditures:

Contractual Services		3,488.38
Credit card fees		2,336.68
Operations & Maintenance		5,686.24
Purchase & install kiosk	83,208.38	618.75
Year to date	<u>83,208.38</u>	<u>12,130.05</u>

Net Profit (Loss) Per Fiscal Year (70,551.08) 41,898.95
 Cumulative Balance Total: (28,652.13)

Be Prepared— One Month At A Time- Part 8

If there is one thing we can take from the past year, it is that natural disasters are unpredictable. Days long power outage's, home evacuations or flooding are natural disasters that we may be faced with. It is important that you and your family are ready for anything that life may bring.

What is the best way to get started? Being prepared may seem overwhelming and costly but breaking up the task throughout the year helps lessen the burden. Over the next several newsletters, we will include a few items that can be good to have included in your emergency kit, as well as a task to complete to make sure your home and family are prepared.

Month 8 supplies:

- Pliers
- Screwdriver
- Hammer
- One box of Heavy-Duty garbage bags

Month 8 activities:

- Store blankets and/or sleeping bags for each family member near disaster supply container
- Collect entertainment such as games, toys and books to add to your disaster kit.

Shop with a Cop!



The 15th Annual Shop with a Cop! will be held on Saturday, December 4th, 2021. This year we will be helping 200 kids from Clackamas County. Many uniformed police officers, deputy sheriffs, and other law enforcement personal will be paired up with the kids, who each are given a \$100 gift card. Interestingly, almost all the kids shop for their family members first, then themselves! The entire event is funded with donations, most come from the public and businesses. If you'd like to contribute, you can donate via the Clackamas County Peace Officer's Benevolent Foundation at www.ccpobf.org or drop off a donation at the GPD. All donors will receive a tax receipt by mail. 100% of your donation will be used for Shop with a Cop!

Get Social



Connect with the City of Gladstone on Facebook, Instagram and Twitter. Stay up-to-date with all the latest news and events happening around you.

Gladstone Public Works Leaf Drop Off & Canned Food Drive



Missed Leaf Pick-up? Too many leaves? The Gladstone Public Works Department will be holding a Leaf Drop Off and Canned Food Drive at the Public Works Yard on Saturday December 11th from 8 am – 2 pm. Fill up your truck and bring your leaves down to the Public Works yard where you can dump them free of charge. We suggest placing them on a tarp for easy and quick removal from the back of your truck. We will be collecting canned food and ask for your support in our collection efforts. Food donations will go to the local food pantry at Hillside Church located on Glen Echo Ave.

GLADSTONE RESIDENTS ONLY - NO CONTRACTORS - NO LANDSCAPERS

The Dangers of Using a Generator Indoors.



Each year, millions rely on a portable generator for their electrical needs when they lose power.

When used improperly, a deadly result can happen. One of the biggest dangers is carbon monoxide (CO) poisoning which can lead to serious illness or death.

What is carbon monoxide (CO) and why is it so dangerous? Carbon monoxide is a gas produced by burning any type of fuel/gas, oil, kerosene, wood, or charcoal. What makes this gas so dangerous is that when you breathe it in, it replaces the oxygen in your blood. Without oxygen, the cells throughout the body die and organs stop working. Breathe too much of it, and it becomes deadly within minutes. What makes carbon monoxide (CO) worse is that you can't see it, smell it, or taste it.

Operating a generator indoors is never a good idea! Some simple steps to take can help eliminate the possibility of injuries or death.

First and foremost, NEVER use indoors. If you must run a generator, make sure that it is positioned at LEAST 15 feet away from doors and windows outside.

- Never plug a generator directly into an outlet as this can send power back into the lines causing a hazardous situation for utility workers.
- Make sure the generator is properly grounded and it is well maintained.
- Never refuel indoors.
- Only a licensed electrician can install an approved automatic transfer switch.
- Only use heavy duty extension cords rated for outdoor use plugged directly into generator.
- Read and follow operator's manual closely before operating your generator.
- Install CO detectors throughout your house to alert you of the presence of carbon monoxide.

Gladstone Police Department (GPD) Santa Squad

The holiday season is rapidly approaching and we are hoping for a festive, fun and safe time for all. The Gladstone Police Department is pleased to announce our 3rd annual "Santa Squad" service. This service will be available to Gladstone residents (only) from December 1st through December 21.



If you are concerned with holiday gifts, packages, or deliveries being stolen from your front porch, this service may be for you. You can have your small packages sent directly to the GPD and pick them up from us, ensuring that the "Grinch" won't ruin the season.

If you are a Gladstone resident, here is what you need to do to take advantage of this free service:

Step #1: Order your package and have it sent to:

C/O Gladstone Police Department (Santa Squad) at 18505 Portland Ave., Gladstone, OR 97027. Don't forget to also include your name so Santa's helper knows who to notify once the package arrives!!

Step #2: Email Cathy (Santa's Helper) at ckerrigan@gladstoneoregon.us and provide:

- *Your name
- *Phone number to reach you when the package arrives
- *Where the package is coming from



After your package arrives, we will call you and you can pick it up Monday-Friday from 8:00 a.m. to 5:00 p.m.

It's that simple! The Gladstone Police Department wishes you a Happy Holiday Season and thanks you for your support.

City of Gladstone—Senior Center
 1050 Portland Ave. Gladstone, Or. 97027
 Phone: 503-655-7701 | ci.gladstone.or.us/sc



The Gladstone Senior Center looks forward to seeing you at the center for a hot lunch starting Dec 1st at 11:45 am. Yes, this means we have re-opened in-person dining services at the center Tuesdays, Wednesdays and Thursday! Please note that all food will be served by staff and volunteers, which includes the salad bar. In order to re-open we will continue to follow standard safety protocols for food and facility usage safety in the dining hall, as per state regulations for COVID-19 safety measures. There are handwashing and sanitization stations throughout the center and a facemask IS required in the center at all times, unless, eating or drinking. If you have specific questions regarding the center please reach out to, Tiffany Kirkpatrick, MA, Community Services Manager 503-655-7701



Meet the Staff!
 Deanna Heman
 Programs and Services
 Tiffany Kirkpatrick
 Community Services Manager
 Michelle Prusso
 Nutrition/Catering



Hanukkah Word Search



P	H	D	S	K	W	W	Q	D	C	E	G
C	F	A	R	B	R	E	C	Z	E	M	M
F	E	J	K	E	L	C	A	R	I	M	X
B	S	S	S	U	I	B	J	U	D	A	H
O	T	E	T	A	N	D	P	J	S	W	E
D	I	L	F	K	S	A	E	R	E	G	R
D	V	D	I	M	Z	A	H	L	E	R	L
Z	A	N	G	X	E	J	U	C	B	Y	I
A	L	A	N	V	T	N	F	S	A	P	G
M	H	C	Y	E	S	N	O	W	C	I	H
X	D	R	A	P	V	R	A	R	C	W	T
Q	L	A	T	K	E	S	R	O	A	U	L
R	L	Z	X	Y	O	S	D	M	M	H	E
L	W	W	I	N	U	A	H	I	B	O	G
E	I	G	H	T	K	Z	Y	D	C	I	Z
U	V	O	H	A	N	U	K	K	A	H	B

- HANUKKAH
- CHANUKAH
- MACCABEES
- MENORAH
- FESTIVAL
- DREIDEL
- CANDLES
- MIRACLE
- OIL
- LIGHT
- JUDAH
- LATKES
- GELT
- EIGHT
- GIFTS



THANK YOU! ALL OF OUR DONORS!

We are filled with gratitude for all the contributions to our fund to purchase fresh hot meals for Thanksgiving for our senior homebound community! They received fresh flowers, bunt cakes, and sparkling cider in addition to their turkey dinners from Busters. All delivered by volunteer community drivers. We exceeded our goal of \$800 to pay for meals and will be able to cover the holiday season's gifts of food boxes, and presents for our homebound senior program.

We love you all! xoxo

CLASSES ARE BACK IN JANUARY 2022

GET REGISTERED for Community School Classes. Classes will begin again at the Gladstone Senior Center as of January 2022!

For now we've added regular Yoga, Acrylic Painting, Watercolor, and a Wills, Trust, and Estate Planning day.

WHAT'S UP in DECEMBER?

SAVE THE DATE- December 23rd Our Annual Holiday Party will be held in the Bloye dining room of the Gladstone Senior Center on **Thursday, Dec 23rd**. We'll have gifts, musical entertainment (dancing?) and a special catered hot lunch, thanks to the **Gladstone Senior Foundation**. We hope you'll join us in celebrating during this exciting time of year. It's very much a blessing to be able to open the center for dining and to see your faces again. Let's give thanks together. Rsvp: 503-655-7701

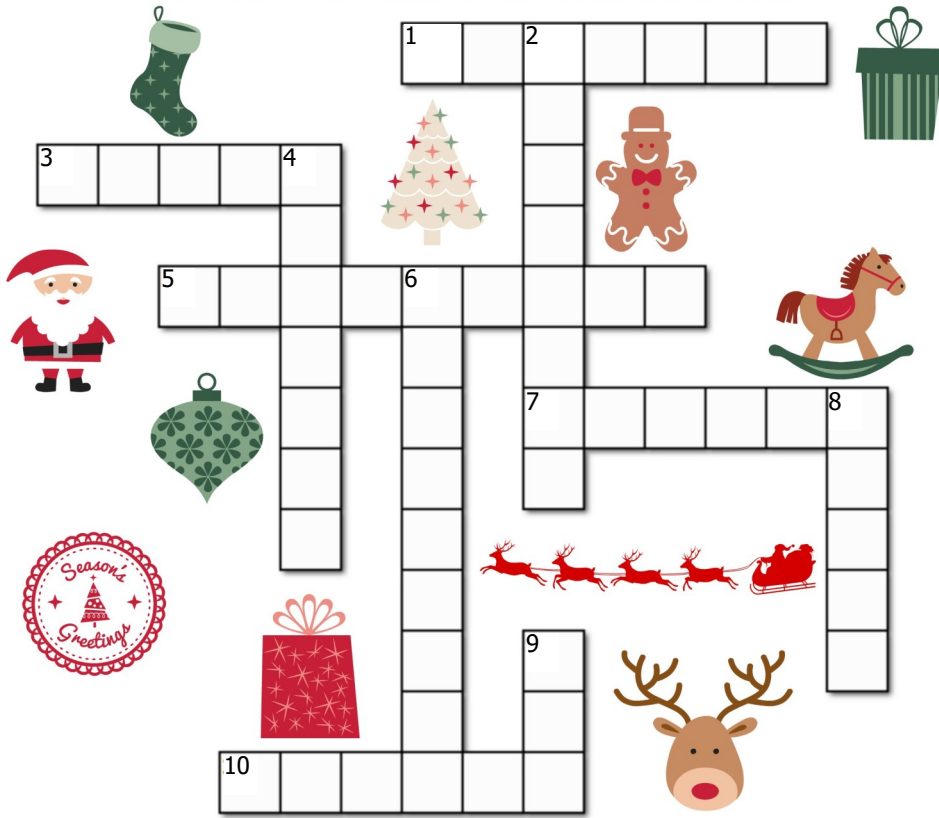
Bus Trips will resume at the Gladstone Senior Center on Fridays. Dec 3rd, Dec. 10th and Dec. 17th as the center will be closed the last two Fridays of December for the holidays. 503-655-7701 Call Michelle M. (bus driver) to sign up

FOOT CLINIC is BOOKED for December 13th + December 14th, so please call us to schedule for January foot care as these days go quickly. 503-655-7701

RENTAL SPACE IS OPEN/AVAILABLE AT THE CENTER: Call the center for details/prices 503-655-7701

CHRISTMAS CROSSWORD PUZZLE

USE THE CLUES TO COMPLETE THE CROSSWORD PUZZLE.



Across

1. One of Santa's Reindeer
3. Santa's Helper
5. December 25th is _____.
7. Christmas Drink
10. The name of a popular Snowman

Down

2. Christmas Month
4. He hates Christmas!
6. You hang them by the chimney.
8. On Christmas Morning we unwrap our _____.
9. ___ to the world!

December 2021 Gladstone Senior Center Activities and Dining

Monday	Tuesday	Wednesday	Thursday	Friday
		1 Dining Room Beef Sloppy Joes Shopping Trip 1:00 pm Scrabble 11:00 am Pinochle 1:00 pm	2 Dining Room Mac and Cheese Chair Exercise 10:30 am Shopping Trip 1:00 pm Rummikub & Cribbage 1:00 pm	3 BUS TRIP: Holiday Craft Fair Scrabble 11:00 am Pinochle 1:00 pm
6 Arts & Crafts 10am Scrabble 11:00 am Pinochle 1:00 pm	7 Dining Room Chicken Salad Chair Exercise 10:30 am Bingo 1:00 pm	8 Dining Room Beefy Mac & Cheese Shopping Trip 1:00 pm Scrabble 1:00 pm Pinochle 1:00 pm	9 Dining Room Hearty Chicken Stew Chair Exercise 10:30 am Shopping Trip 1:00 pm Rummikub & Cribbage 1:00 pm	10 BUS TRIP: Lunch Outing Scrabble 11:00 am Pinochle 1:00 pm
13 Arts & Crafts 10:00 am Foot Clinic Scrabble 11:00 am Pinochle 1:00 pm	14 Dining Room Roasted Pork Chair Exercise 10:30 am Foot Clinic Blood Pressure checks at center Bingo 1:00 pm	15 Dining Room Chicken Alfredo Bake Shopping Trip 1:00 pm Scrabble 1:00 pm Pinochle 1:00 pm	16 Dining Room Turkey & Penne Pasta Chair Exercise 10:30 am Shopping Trip 1:00 pm Rummikub & Cribbage 1:00 pm	17 BUS TRIP: Clackamas County Fair Holiday Light Show 5:00 pm Scrabble 11:00 am Pinochle 1:00 pm
20 Arts & Crafts 10:00 am Scrabble 11:00 am Pinochle 1:00 pm	21 Dining Room Ham W/ Raisin Sauce Chair Exercise 10:30 am Bingo 1:00 pm	22 Dining Room Turkey Patty Gravy Shopping Trip 1:00 pm Scrabble 1:00 pm Pinochle 1:00 pm	23 ANNUAL Holiday Party! Chair Exercise 10:30 am Shopping Trip 1:00 pm Rummikub & Cribbage 1:00 pm	24 CLOSED
27 Arts & Crafts 10:00 am Scrabble 11:00 am Pinochle 1:00 pm	28 Dining Room Chicken Tetrazzini Chair Exercise 10:30 am Bingo 1:00 pm	29 Dining Room Beef Stew Shopping Trip 1:00 pm Scrabble 1:00 pm Pinochle 1:00 pm	30 Dining Room Chicken Pomodoro Chair Exercise 10:30 am Shopping Trip 1:00 pm Rummikub & Cribbage 1:00 pm	31 CLOSED HAPPY NEW YEAR

Rats! If You Feed Them, They Will Come

Controlling rats is the first step but often isn't a long-term solution. If you see rats on your property they are there because there is a nearby food source. You can trap them or hire an exterminator but this alone is not enough. You must take additional rat prevention measures to make your home and property less welcoming and work with neighbors to share information and help keep areas clean

Rat Prevention Tips

- Don't leave uneaten pet food outside. Keep pet food stored in plastic bins.
- Store indoor food properly, in containers if possible. Don't leave untended food out on counters.
- Thin out dense brush that provides shelter.
- Keep bird seed off the ground by using baffles. Hang bird feeders away from eaves or fences that give rats easy access.
- Use the hot compost process or a contained system. At the very least, keep

food scraps out of compost piles.

- Clean up fruit that's dropped to the ground.
- Repair gaps larger than ¼ inch around doors, windows, crawl space screens, attic vents and any other place where holes may provide access.
- Keep garbage in a plastic bin with a lid.
- Make sure rats don't have access to chicken feed or chickens, which they can kill. Use a smaller aperture hardware cloth rather than chicken wire. Bury the bottom several inches below ground. Make sure coop is rat proof by closing up any holes bigger than a nickel.
- Use bait and traps, keeping in mind this will only work if there are a few rats; for larger populations consider hiring a licensed and bonded exterminator.
- Stay vigilant. Even if you don't see rats, they are around and keeping your home and landscape unattractive to them will help keep them at bay.

Recycle Guide

Your guide to what goes where in Gladstone

Recycling Recicla je Утиль Rác Tái chế 回收

Plastic bottles, plastic round containers, metal, paper & cardboard
6 oz or larger, empty & dry

Glass Vidrio Стекло Rác Thủy tinh 玻璃

In separate glass bin.
Missing yours? Call Gladstone Disposal Co.
Bottles & jars only empty & dry, no lids

Yard Waste Desechos de jardinería Rác Sân Vườn Хозяйственные отбросы 庭院废物

Leaves, grass, small branches, plants & trimmings

Garbage Basura Мусор Rác còn lại 垃圾

All garbage including plastic bags, to-go containers, lids & packaging
Some items accepted at recycling depots. Visit webpage to learn more.

More detailed guide: www.clackamas.us/recycling/recycleguide.html
Gladstone Disposal 503-656-9426 Clackamas County Sustainability & Solid Waste 503-557-6363 Metro's Recycling Information Center 503-234-3000

Portland General Electric News

We heard you and made things better

There's nothing quite like a nasty ice storm that causes major damage and outages to show us all just how important electricity is in our lives. That's why we always strive to provide safe and reliable service and have been working hard these past months, increasing our resilience and improving how we serve you when outages happen.

That starts with how we communicate with you. We heard your feedback and have improved our outage map to make it easier to get the information you need. Now you can see your specific outage, search for your home by phone number, and see where we're at in the restoration process.

You'll now also get a text alert when your power goes out, and another when it's back on.

We know that no one likes an outage. But being better informed will help you plan for whatever Mother Nature throws our way. portlandgeneral.com/outage

Visit <https://portlandgeneral.com/outages-safety/be-prepared/prepare-your-home> for tips and tricks, including a downloadable checklist, to help get you ready for winter storms and emergencies that might have a more significant impact.

Update your contact info

Make sure we can text you if the power goes out. It just takes a minute to add or update your mobile number online or by calling 503-228-6322. portlandgeneral.com/update

Real people. Real solutions.

Call us, we have lots of ways to help with your bill

Sometimes it can be difficult to pay your bills. That's why we have options and unique ways to help. It all starts with a phone call. Yes, a phone call may seem a little old fashioned, but we believe that if you talk with us, we'll be able to better understand your situation and come up with a solution. If you've fallen behind on your bill, give us a call at 503-228-6322 and let's see what we can do to help

Power lines and vegetation

We love trees — we are Oregonians, after all! Healthy trees, shrubs and other plants are part of "green infrastructure," which helps clean our air, beautify our neighborhoods, shade our homes and provide wildlife habitat. To keep everyone safe, we need to keep trees and other vegetation away from power lines. Trees growing too close to power lines can trigger outages or pose safety and fire risks.

Our contract tree crews are carefully trained to work near power lines, clearing away branches and vegetation so we can do maintenance work and equipment upgrades. Tree crews will visit your area every two to three years to inspect and prune trees along power line rights of way. Sometimes, we need to remove a tree before it becomes a hazard to the power line. We don't make these decisions lightly, which is why we have arborists and forestry staff to guide us.

Choosing the right tree for the right place is

the first step in making sure your tree can grow naturally to a mature size while your electricity stays reliable and safe.

Right tree, right place

To improve your safety, reduce maintenance hassles and reduce tree-related power outages, use these guidelines when choosing and planting trees.

Zone 1- Under distribution power lines: Distribution lines are primarily near roads and sidewalks, and sometimes backyards. Stick with small trees with a maximum mature height of 20-30 feet.

Zone 2- Front, side or back yard: This is usually where the power line drops from the pole into your building. Choose small to medium trees, depending on the size of your yard. Medium-sized trees (30-50 feet) require large, private lawn areas.

Zone 3- Backyard: Any size tree is okay, as long as there are no overhead lines. Consider the size of your yard. Large trees (50+ feet) require a large yard.

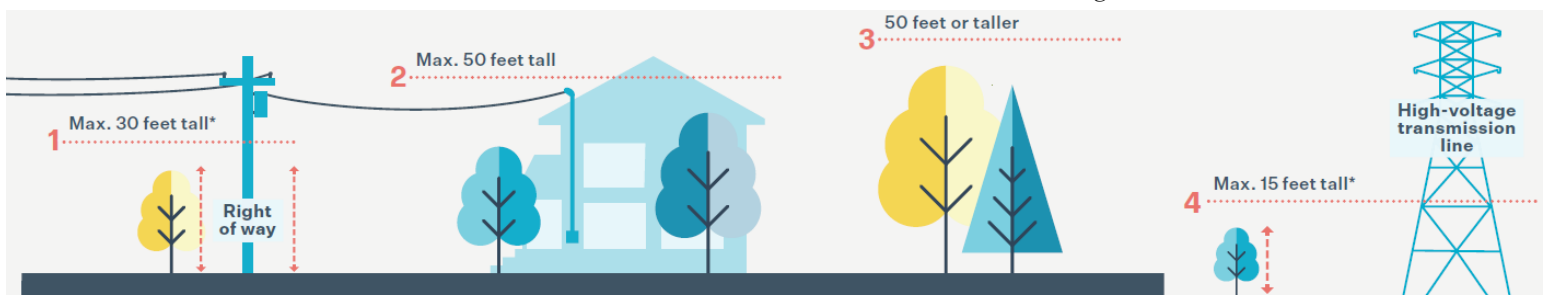
Zone 4- Near transmission lines: If there's a high-voltage transmission line on or near your property, the tree should be no more than 15 feet tall and at least 30 feet away.

Visit portlandgeneral.com/outages-safety/safety/tree-maintenance/tree-planting-guide

We're here for you.

Online at portlandgeneral.com or PGE app
Customer Service: 503-228-6322, 7 a.m. to 7 p.m., Mon. to Fri.

Outage or downed line: 503-464-7777, 24/7



13th Annual Santa and the Seagrave



Come out and see Santa this year on the historic 1973 Gladstone Seagrave Fire Engine. The engine now has its original color and decals back! Santa will be riding in his special sleigh during the nights of December 9th, 10th and 11th. The Kool Bus will again be following for any donations of toys or food for Gladstone families. Santa will be in historic downtown on the 9th, River Road and lower North Gladstone on the 10th, the highlands and Sherwood Forest on the 11th. Please check our Facebook page at <https://facebook.com/santa.mack.1> for further route and day of information.

Gladstone High School Honors Veterans



Gladstone High School's bands and choirs performed in celebration of Veterans across the community. Highlights included an acapella version of the National Anthem and the Armed Forces Medley celebrating the Army, Navy, Air Force, Coast Guard, and Marines. The performance can be viewed here: <https://www.youtube.com/watch?v=mxXIgpr40Y>

Local veteran Scott Guptill during the Veterans Day Assembly.

Speakers included local Veteran Scott Guptil, and guest speaker U.S. Army retired JAG officer Colonel Jack Hammond. Hammond is the great grandson of Gladstone founder Harvey Cross, who served as Gladstone's second mayor.

"COVID prevented us from gathering with local Veterans this year, but we look forward to the day when we can welcome them back to Gladstone High," said Principal Kevin Taylor.

Have You Seen This Tree?



This Tree of Heaven or ToH, (*ailanthus altissima*) is originally from Asia and is highly invasive. Many of these can be found right here in Gladstone. This tree can grow to 60 feet tall and has the ability to undermine foundations and driveways, even after it's chopped down. ToH is easily confused with sumac, black walnut, and hickory, but a dead giveaway is the foul peanut odor produced by crushing the foliage. ToH is very difficult to remove. The best way to eliminate it is to first target the roots with systemic herbicides applied in mid- to late summer, chop it down, and then dig out any remaining roots.

Other common invasives throughout the city of Gladstone include:

- English ivy, *hedera helix*
- Himalayan blackberry, *rubus armeniacus*
- Old man's beard, *clematis vitalba*
- Scotch broom, *cytiscus scoparius*

To learn more about Oregon's invasives go to solveoregon.org/invasive-plants
The Friends of Gladstone Nature Park are working year-round to eradicate invasives from the Gladstone Nature Park. Volunteers of all ages and sizes are welcome. Contact us at: friendsofgladstonenature@gmail.com.

PLEASE NOTE: There will be no monthly work party in December since the last Saturday is in fact Christmas.

Public Records, Permits, Planning

- A Public Records Request form and fee are required for anyone requesting public records information, download form at, www.ci.gladstone.or.us.
- Do you have a question about fence height, setbacks, zoning, traffic or park regulations? If so, the Gladstone Municipal Code is online at www.codepublishing.com/OR/Gladstone/.
- The City contracts with Clackamas County for administration of the City's land use planning & building permits, including plumbing, electrical, grading, etc. Most questions may be answered by visiting the county's website at www.clackamas.us/building/or by calling 503-742-4240.

Hanging Tree Branches



Public Works is asking residents to trim tree branches by cutting branches seven feet (7') above sidewalks and fourteen feet (14') above streets. Please cut your branches and place them in your yard debris cart. If Public Works determines there is a risk of damage or injury, they may cut your tree branches without notice.

During winter months, please remove portable basketball hoops from city streets to reduce interference with street sweeping.

Free Clothes for Kids and Teens – Saturdays from 10 a.m. to noon



The Gladstone Kids Clothes Closet is open for free clothes shopping and donation drop-offs each Saturday from 10 a.m. to noon. It is located off Nelson Lane in a portable classroom on the north side of Gladstone High School.

The facility serves any youth from birth to age 18. They provide free, gently-used clothing, jackets, and shoes, as well as new socks and underwear. All are welcome.

For more information, contact Clothes Closet Coordinator Becky Speulda at bbspeulda@yahoo.com or call 503.997.8503.

Gladstone Food Pantry

Families who need nutritious food are invited to shop at the Gladstone Food Pantry each Thursday. From 3 to 5:30 p.m. The facility is located at 6460 Glen Echo behind Hillside Fellowship. All residents of Gladstone, Jennings Lodge, and Oak Grove are welcome. The pantry provides meat, fresh produce, bread, frozen foods, canned and boxed foods, and more.



Christmas Tree Recycling Fundraiser for Cub Scout Pack 510



January 8 from 10 am - 12 pm, suggested donation \$10. Schedule a pickup by emailing cubmasterpack510@gmail.com or trees can be dropped off St Stephens Lutheran Church (290 W Gloucester St). Thanks for supporting your local Cub Scout Pack!

Utility Bill Drop Box

Did you know you can drop off your monthly utility bills, including: PGE, Northwest Natural Gas, Gladstone Water/Sewer/Stormwater and Gladstone Disposal, at the Senior Center? No stamps needed! A drop box is located inside the main entry door as well as a 24/7 green drop-box located outside the main entrance.



Local Telephone Numbers

City Hall General Business Line	503-656-5225
Utility Billing/Water/Sewer Acct Info ..	503-557-2771
Municipal Court/Traffic Citations	503-557-2772
Public Works	503-656-7957
Police Dept. M-F, 8am to 5pm	503-557-2797
Fire Dept. M-F, 8am to 5pm	503-557-2776
Library	503-655-8540
Senior Center	503-655-7701
Recreation/Business License	503-557-2766
Planning	503-742-4510
Electrical/Plumbing Permits	503-742-4240
Nuisance Concerns/Code Compliance ..	503-557-2763
Clackamas County Dog Services	503-655-8628
Gladstone School District	503-655-2777
Gladstone High School	503-655-2544
Kraxberger Middle School	503-655-3636
Wetten Elementary School	503-656-6564
Gladstone Disposal Company	503-656-9426
Dept. of Motor Vehicles (DMV)	503-299-9999
Portland General Electric	503-228-6322
Northwest Natural Gas	503-226-4211
Comcast Cable	1-800-934-6489
Century Link	1-866-642-0444
Non-Emergency Dispatch	503-655-8211
(option 1 for police or fire calls)	

We appreciate your patience and cooperation with safety measures (such as masks for ages 5+) posted at the library when you visit. Our hours continue as usual:

Monday, Friday, Saturday, and Sunday:

10 am – 6 pm

Tuesday and Thursday:

12 noon – 8 pm

Wednesday:

10 am – 8 pm

December happenings and reminders include:

• **CLOSED** Saturday, December 25th for Christmas Day.

• **Twice Sold Tales** bookstore within the Library is open! Shop a great selection of books and DVDs for all ages. The bookstore is run by the Gladstone Public Library Foundation, who is once again accepting donations of books and DVDs at the Library (limit two bags or boxes).

• **Food for Fines** continues through December 18th! Each nonperishable food item donated earns \$1 off overdue fines (we can't accept expired or damaged items, or ramen noodles). Donations will remain local and benefit your Gladstone neighbors. This promotion supports the **2021 Gladstone Toy & Food Drive** in partnership with the Gladstone Fire Department Membership Association, Gladstone High School, and

other community partners.

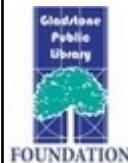
• **StoryWalk®** at the Gladstone Nature Park! Follow the signs through the park to read the English/Spanish "Call Me Tree" by Maya Christina Gonzalez, and perform the activities on each panel. Presented in partnership with the Friends of Gladstone Nature Park and the Gladstone Public Library Foundation, this is the last month for "Call Me Tree" – we'll have a new story in the new year!

• **ZOOM Virtual Storytime** Wednesdays at 10:30 am with Teacher Heather! Request [meeting link/password](https://www.gplfoundation.org) at gladstone@lincc.org (this changes each week). **NO STORYTIMES** on December 22nd or December 29th.

• Your Clackamas County Library Advisory Board meets virtually at 5:30 pm on the third Thursday of each month. The next meeting is on December 16th - for upcoming meeting details and instructions, visit clackamas.us/lib/clackamas-county-library-advisory-board/#meetings.

• **Gladstone Task Force** meetings! Stay up-to-date on the new building project. For meeting schedules and links, visit clackamas.us/meetings/communityproject/oakgladproj.

Please contact us by phone at 503-655-8540, or by email at gladstone@lincc.org if you have questions.



Are you set for the holidays? Stumped for ideas? Well, we've got some good ones for you. Come in and browse our books and CDs on our Twice Sold Tales shelves at the library. You'll find something for all ages. You can also visit our online book sale by logging on to: <https://www.gplfoundation.org>.

Many thanks to the Rotary Club and all the local merchants who participated in the Halloween Carnival. We gave away 250 shiny new books and candy to delighted children.

Joining Fred Meyer's Rewards program and Amazon Smile is a simple way to help build our library. Just sign up, then link onto the Gladstone Public Library Foundation website. For Fred Meyer's go to: <https://www.fredmeyer.com/i/community/community-rewards>. For Amazon, link onto AmazonSmile, fill out the form and you're all set.

As 2021 comes to an end, we hope you'll remember us by sending a donation to Gladstone Public Library Foundation at PO Box 146, Gladstone, OR 97027-0145. Every penny goes to support our library.

Please join us in our journey to build a new library.

"Without libraries what have we? We have no past and no future. – Ray Bradbury

Have a wonderful holiday. Stay safe, stay healthy, and read.

**CITY OF GLADSTONE
18505 PORTLAND AVENUE
GLADSTONE, OR 97027**



POSTAL CUSTOMER

PRE-SORT
STANDARD RATE
U.S. Postage
PAID
Gladstone, OR
Permit #28

City Hall—18505 Portland Ave
Police Department—18505 Portland Ave
Fire Department—555 Portland Ave
Public Works Department—18595 Portland Ave
Senior Center—1050 Portland Ave
Library—135 E. Dartmouth St.

Free COVID-19 vaccines & boosters at Gladstone High



Gladstone High School will host free COVID-19 vaccination clinics open to the community. Public health officials say vaccines are the best way to prevent serious illness, hospitalization and death from the disease.

Date: December 8

Time: 4-7 p.m.

Location: Gladstone High, 18800 Portland Ave. Enter via Athletic Entrance on the right

Providing:

- Pfizer Pediatric 1st & 2nd vaccines [ages 5-11]
- Pfizer 1st, 2nd, and booster doses [ages 12+]
- Moderna 1st, 2nd, and booster doses. [ages 18+]
- J&J 1st dose and booster [ages 18+]

Appointments Required: visit <https://web3.clackamas.us/schedule/start.jsp?type=phvac> to schedule an appointment.

Enter this Location Code: ghs (all lower case)

Those coming for boosters should bring their vaccine card. If you are returning for your second shot at the same location as your first, your appointment is already booked.

If you are not able to get an appointment at one of these events, try pharmacies such as Walgreens, Safeway, Fred Meyer, and Rite Aid or call your medical provider.

<p>City Meetings:</p> <p>*City Council- 2nd Tuesday & 4th Tuesday (if necessary) - 6:30 pm—currently being held on Zoom</p> <p>*Planning Commission- 3rd Tuesday (as needed) - 6:30 pm currently being held on Zoom</p> <p>*Traffic Safety- 4th Monday every other month (as needed) - 6:30 pm—currently being held on Zoom</p> <p>*Park & Recreation- 2nd Monday (as needed) - 6:30 pm, currently being held on Zoom</p> <p>*Senior Center Advisory- held bi-monthly on the 3rd Tuesday at 3:30 pm at the Gladstone Senior Center., 1050 Portland Avenue.</p>	<p>Copies of all City meeting packets and agendas can be found on the City's website at: www.ci.gladstone.or.us/meetings</p> <p>Local Meetings:</p> <p>*Friends of Gladstone Nature Park- Meets the last Saturday of the month from 9:00 am-12:00 pm at 18111 Webster Rd, Gladstone. For more info visit protecttheparks.org</p> <p>*Gladstone Historical Society- Please visit www.gladstonehistorical.society.org/ for more information.</p>
--	---