



# Public Works

## Staff Report for January 2024

---

Report Date : January 31, 2024  
To : Jacque M. Betz, City Administrator  
Copy : Mayor and City Council  
From : Darren Caniparoli, Public Works Director

---

### WATER:

- Utility billing service orders.
- Routine coliform sampling, system chlorine residual monitoring
- Routine pumpstation/reservoir inspections
- Utility billing door hangers and shut-offs for nonpayment.
- Call in the city's Master Meter read to the treatment plant weekly
- Change the recording charts at the Webster Reservoir Pump Station weekly
- Investigate meter readings for discrepancies, high usage, leaks, re-reads for Utility Billing.

During the recent ice storm, a power outage in the Ridgeway area caused an electrical issue at the Webster pump station. To prevent a loss of pressure to the affected area the system functioned properly in pulling off the Oaklodge Water District inter-tie, the city remained on the inter-tie until the electrical issue could be resolved; which was about 5 days.

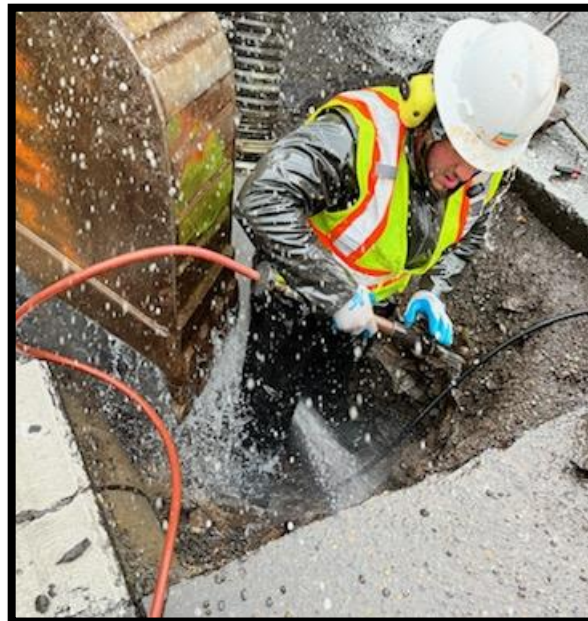


Crews assisted multiple residents with water shut offs during the ice storm and several days following.  
Crews also responded to assist with shutting off the water at the Lake Oswego Intake due to a water line break. (Pictured left)



Crews have stayed busy with plenty of water repairs and service replacements recently. The service line at 510 E. Arlington was replaced due to the significant break in the line, which could not be repaired adequately.

It was all hands on deck for a water main break on Oatfield Rd. just south of Ridgegate Dr. Crews were onsite making repairs in very cold temperatures right before the ice storm hit. Paving the area of the repair took place following the ice storm when ground temperatures were more “ideal”.



## SEWER:

- Following the warm-up from the recent weather event, the sewer department received an alert to a spike in the water level at a monitored manhole. Crews installed a sand bag diversion upstream of that manhole to by-pass the high flowing manhole to prevent an overflow into the river.
- The sewer crew is working on line cleaning in the upper zones of the city; crews are also inspecting sewer mains utilizing the CCTV truck after cleaning looking for breaks or areas of concern.
- Crews continue using the camera truck to locate sewer laterals throughout the town and mark them at the curb with a sewer marker.

## STORM:

- With plowing roads during a storm, it is inevitable that catch basins become blocked. Following the storm crews worked to clear our blocked catch basins allowing water to freely flow again.
- Crews worked to continuously clear debris from the headwall grates to help prevent flooding during the thaw and heavy rains that followed.
- After receiving several calls regarding a possible sinkhole at the intersection of Los Verdes and Webster Rd., crews utilized the CCTV truck to inspect the storm line at the location. The inspection found a separated storm line. With the pipe separated, rock and sediment were falling into the pipe causing the sinkhole. Crews called in emergency locates, plated the sinkhole and ordered repair parts so that the repair could begin as soon as locates were completed.



## PARKS:

- Trash pick-up & Bathrooms cleaned in all parks two days a week.
- Pressure washing hard surfaces in all city parks is ongoing.
- Crews winterized all of the park restrooms and drinking fountains to prevent freezing with the drop in temperatures.
- Vandalism and graffiti clean-up continues in our city parks, mainly the bathrooms and structures within the parks.

Recently Park Journeyman, Scott Johnson came across some suspicious acting teens near the pit toilet at Meldrum Bar Park. Quickly recognizing that they had tagged the bathroom inside and out, he contacted GPD to make a report and give a detailed description of the teens. GPD responded but did not find the teens in the area, Scott came across them leaving the area of the River Place apartments heading towards Portland Ave. contacted Officer Lee Gilliam to report the location, after a bit of cat and mouse the teens were apprehended. The city will be holding them accountable for their actions; the hope is that they will not do this again. They caused over \$1,000.00 in damage to city property; a small snippet of their illegal activities is below.





Following the ice storm we had heavy rains. Much like last months heavy rains it resulted in high river levels at the Meldrum Bar Boat Ramp. High water levels cause an influx of organic material making its way down the river; logs, fallen trees, twigs, large sticks. Crews work to keep the boat ramp and dock area free of debris not only to minimize damage to the dock itself but to maintain access to our waterway. The hours spent cleaning and clearing this area is also tracked and reported to the Oregon State Marine Board as part of our labor match for the MAPS Grant. The MAPS Grant provides a portion of funding for the boating area of Meldrum Bar Park.



## STREETS:

- Pothole repair is in full force around town following the ice storm. We saw a lot of patches fail or bust out due to the use of chains.
- Storm preparations: Crews worked to make sure all of our equipment was ready to go, prepping/installing the snowplow, sanding box and de-icing apparatus in the proper vehicles. Verified we had sufficient magnesium chloride on hand, rock for roadways if needed and chains for all of our vehicles.

In preparation, for the storm crews laid down deicer on all of our snow route roads per our snow and ice response plan. This not only helps keep the roads clear longer but it also helps keep the snow and ice from bonding to the road making it easier to clear the snow with the snow plow. As part of the planning for the storm, crews were shifted to 24-hour coverage for the storm, running shifts from Midnight to noon until Sunday, January 14<sup>th</sup>. The entire time the crews were monitoring road conditions and plowing and sanding when needed.

On Tuesday January 16<sup>th</sup> freezing rain hit, crews came in early, focusing on our roadways and getting city buildings ready to open. Crews shoveled sidewalks at all city facilities, laid down deicer to prevent refreezing and crews continued this through Wednesday January 17<sup>th</sup>.



## ADMINISTRATION:

- Completed the Clackamas County WES annual sanitary sewer system I/I member annual report, which will be submitted to DEQ.
- Completed the end of year water main extension summary and submitted to OHA DWS.
- Assisted a fire flow test at Arlington St and Bellevue Ave.
- Working on developing a scope of work for the water system unidirectional flushing program design RFP.
- Working on implementing Hillside Church Preschool development conditions of approval.
- Working on completing Gladstone's Clackamas County Multi-Jurisdiction Natural Hazard Mitigation Plan Addendum. The final draft is posted on the City website for public review and comments.
- Working with our members of the Regional Water Providers Consortium and Clackamas River Water Providers to enhance water supply interconnectedness and emergency management planning.
- Clackamas County Building Permit plan reviews, approvals and release letters.
- Continued development of ROW procedures and rollout of the new ROW Ordinance. ROW Licensing is now managed by administration within the Public Works.
- Approval and issuance of 12 ROW Permits in January with 19 closed out with final tolling inspections.
- Attended regulatory meetings as required
- ROW Inspections for private and commercial work within the ROW.
- Managed the Evergreen Lane Stormline project RPF, issued two addenda items. RFP will close February 7<sup>th</sup>.
- System Development Charges, calculations for five private developments and 1 commercial property.

*"Good teams become great ones when the members trust each other enough to surrender the me for the we."*

~ Phil Jackson